

# Grønn Jyllandskorridor

DSV

# Innhold

- Introduksjon
- Mål og roadmap
- Reduksjon av CO<sub>2</sub>e
- Hva skal til for at vi lykkes?

# Introduksjon

DSV

# Our journey towards net-zero

Reducing the carbon footprint of our company and value chain

## Near-term targets\*

By 2030 reduce by

**↓ 50%**

Scopes 1 and 2 absolute emissions

**↓ 30%**

Scope 3 absolute emissions

*Compared to a 2019 baseline.  
Validated by SBTi*

## Long-term commitment\*

By 2050 achieve

**NET-ZERO**

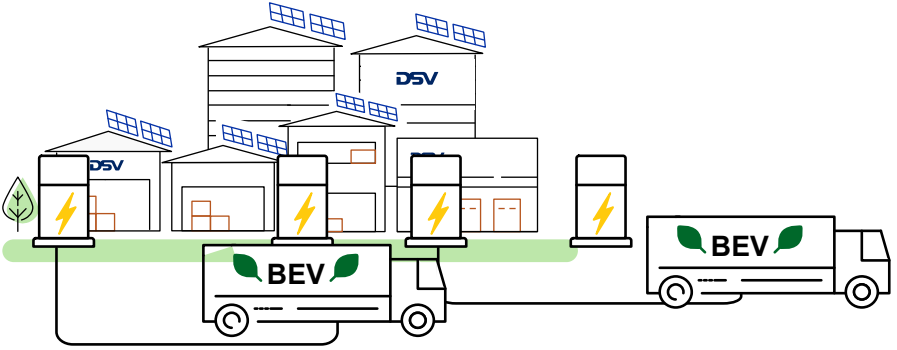
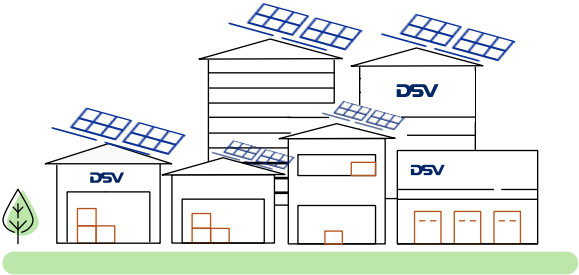
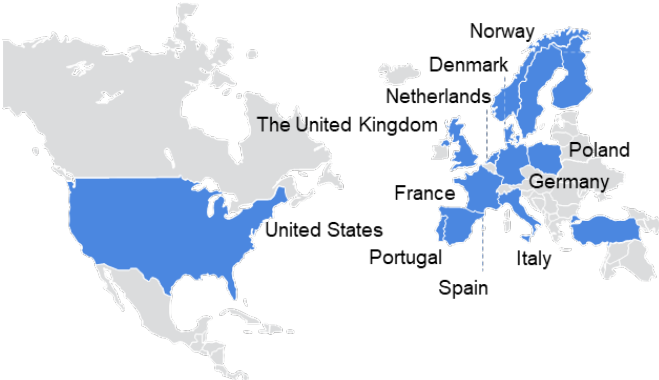
carbon emissions  
in all scopes

*Our net-zero target has been  
submitted to SBTi for validation.*



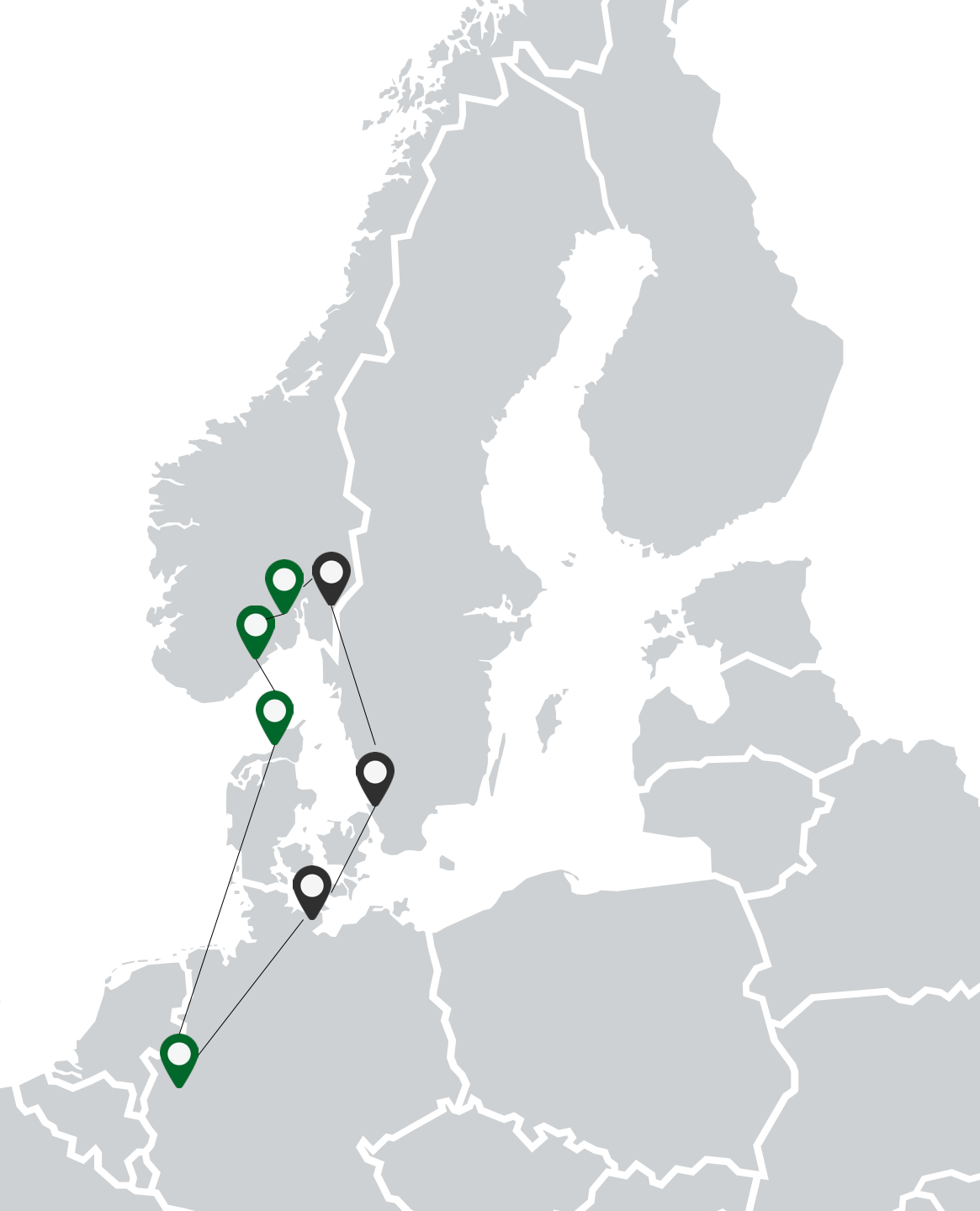
*\* The target boundary includes land-related emissions and removals from bioenergy feedstocks.*

# Roadmap



# Redusering av CO2-utslipp





## Kundespesifikk case



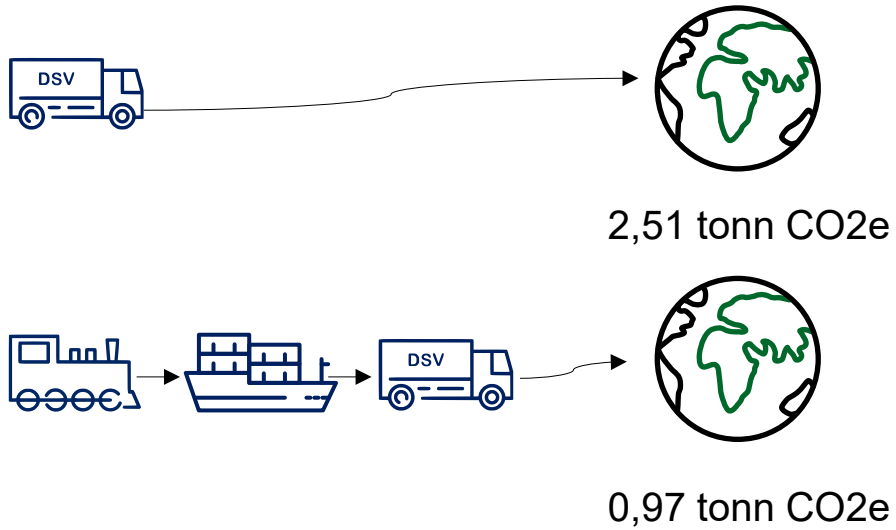
Euro 6 hele veien via Sverige



Tog – Ferge – Bil



## CO2-besparelse



- 1,54 tonn CO2e per sending

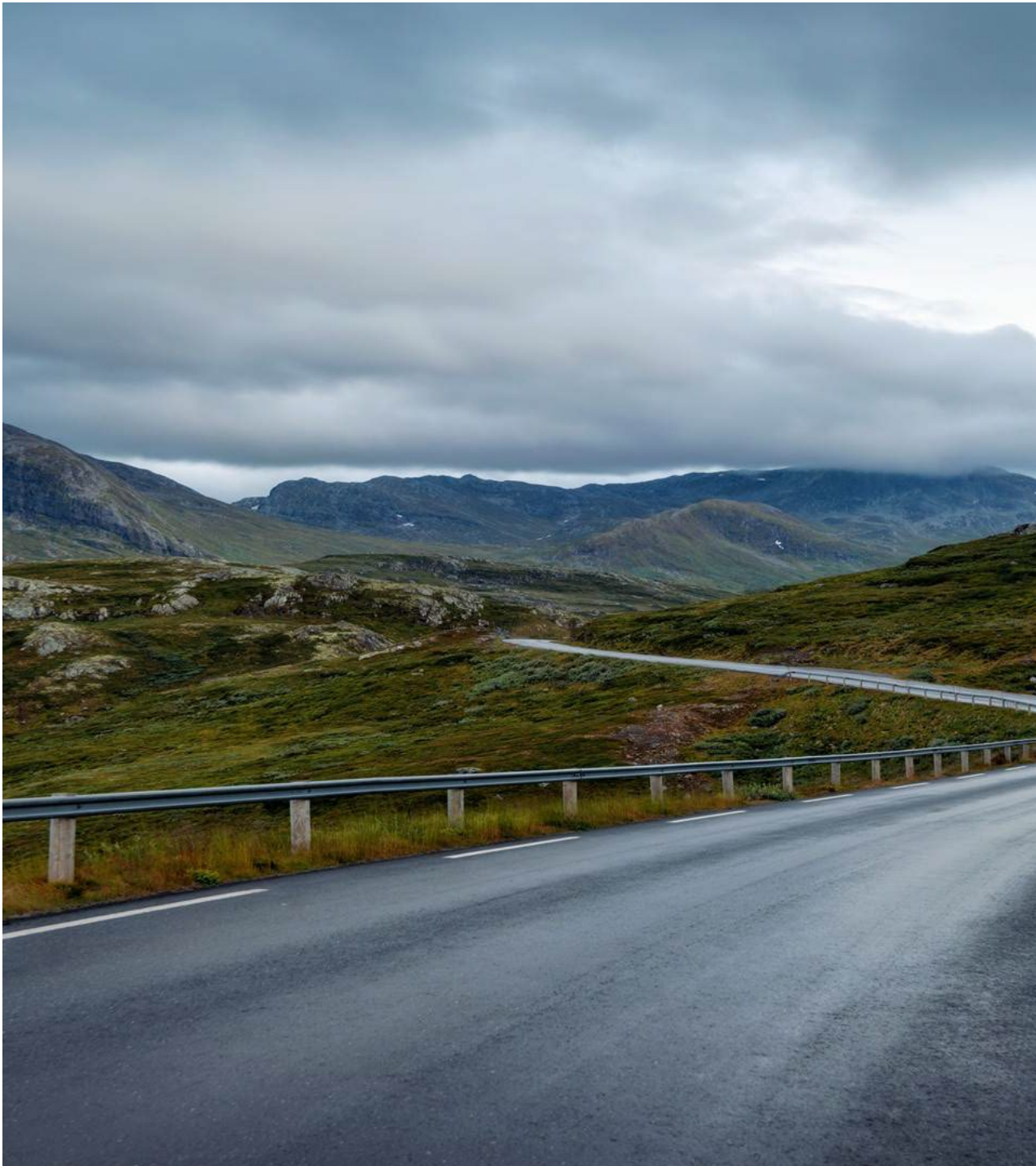
- 61% reduksjon

- 308 tonn CO2e årlig



An aerial photograph of a vast, lush green valley. The foreground is dominated by dense, vibrant green forest covering rolling hills and a deep valley. In the middle ground, a small town or village is visible, nestled in a valley. The background features a wide expanse of water, likely a bay or a large lake, with several islands and peninsulas. The sky is filled with soft, white clouds, and the overall lighting is bright and natural, suggesting a clear day. The text "Hva skal til for at vi lykkes?" is overlaid in the center of the image in a large, white, sans-serif font.

**Hva skal til for at vi lykkes?**

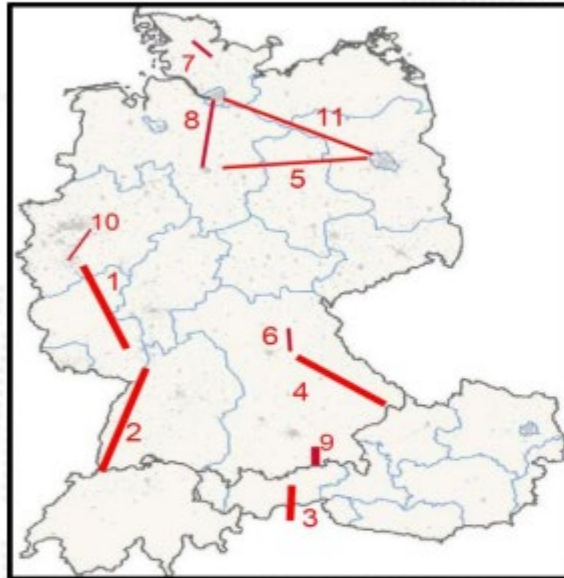


## **Innspill og forutsetninger fra DSV:**

- **Ferge ruter & kapasitet**
- **Utdatert eller underdimensjonert infrastruktur**
- **Koordinering & ansvar**
- **Investeringer**
- **Økt RoRo kapasitet**
- **Vi lykkes ikke dersom vi fortsetter å gjøre alternativet med "selvkjørende" transport billigere enn andre løsninger.**
- **HUB Forum fungerer som en katalysator for samarbeid, og muliggjør diskusjon og forpliktelser til handling**
- **Identifiserer**
- **Er vi klar ?**

# Overview 2026

## Current Status / Outlook 2026 infrastructure construction work areas:



- 1) Troisdorf – Koblenz – Wiesbaden  
(right bank of the Rhine valley)  
periodic total closure July – December 2026
- 2) Rhine Valley  
periodic closure and / or limitation to 1 track
- 3) Brenner Closing 11.07. – 02.08.2026
- 4) Corridor Nuremberg – Regensburg – Passau  
4 periods with total closure 06.02 – 12.12.2026
- 5) Lehrte – Berlin July – December 2026
- 6) Fürth – Bamberg 07.03. – 05.07.2026
- 7) Rendsburg – Neumünster total closure  
every weekend 29.08. – 12.12.2026
- 8) Hannover – Hamburg 2 periods of construction works  
with total closure 01.05. – 04.12.2026
- 9) Rosenheim – Kufstein  
total closure 12.07. – 30.07.2026
- 10) Hagen – Wuppertal – Cologne  
total closure 06.02. – 10.07.2026
- 11) Hamburg – Berlin  
total closure 01.08.2025 – 30.04.2026

(red marks = expected medium or high impact on ECL intermodal network)



Global Transport and Logistics